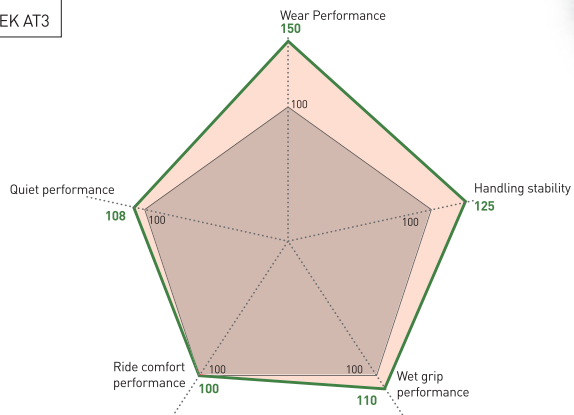


Performance Chart

GRANDTREK AT5

— GRANDTREK AT5
— GRANDTREK AT3



<Test Condition>
 • Tire Size : 265/65R17 112S
 • Vehicle : General car (ex: Hilux)
 • Air Pressure : 180-250 kPa
 • Speed : 100km/h (Ave.) 140km/h(Max.)
 • Road Surface : Paved road

* Above chart indicates to reflect performance comparison and the actual performance on the road is not necessarily identical.



Size Lineup

4x4 / SUV : 37 sizes

Rim Diameter (inch)	Aspect Ratio (%)	Tire size	LISS	XL	Side Design
20	50	265/50R20	111H	XL	BLT
		285/50R20	112H	-	BLT
18	55	275/55R20	113T	-	BLT
	55	225/55R18	98H	-	BLT
17	60	225/55R18	109H	XL	BLT
		235/60R18	103H	-	BLT
	255/60R18	112H	XL	BLT	
	265/60R18	110H	-	BLT	
	285/60R18	120H	XL	BLT	
	55	215/55R17	94H	-	BLT
		60	215/60R17	100H	XL
	65	225/60R17	99H	-	BLT
		225/65R17	102H	-	BLT
		235/65R17	108H	XL	BLT
245/65R17		107H	-	OWL	
265/65R17		112S	-	BLT	
275/65R17		115H	-	OWL	
285/65R17		116H	-	BLT	
70		225/70R17	108S	XL	BLT
75	245/75R17	112S	-	OWL	
16	60	235/60R16	100H	-	BLT
		215/65R16	98H	-	BLT
	65	255/65R16	109H	-	BLT
		215/70R16	100T	-	BLT
	70	225/70R16	103T	-	OWL
		235/70R16	106S	-	OWL
		245/70R16	111T	XL	OWL
		255/70R16	111T	-	OWL
		265/70R16	112T	-	OWL
		275/70R16	114T	-	OWL
80	175/80R16	91S	-	BLT	
	70	205/70R15	96T	-	OWL
		225/70R15	100T	-	OWL
	80	255/70R15	108T	-	OWL
		265/70R15	112T	-	OWL
	80	175/80R15	90S	-	BLT
225/80R15		105S	-	BLT	

LT : 10 sizes

Rim Diameter (inch)	Aspect Ratio (%)	Tire size	LISS	XL	Side Design
16	70	L265/70R16	117T	-	OWL
	75	L225/75R16	110S	-	OWL
15	85	L245/75R16	114S	-	OWL
		L265/75R16	112S	-	OWL
	75	L285/75R16	122Q	-	OWL
		L235/85R16	120R	-	OWL
15	75	L215/75R15	100S	-	OWL
		L235/75R15	104S	-	OWL
		30X950R15	104S	-	OWL
		31X1050R15	109S	-	OWL



[Reference]



DO MORE



GRANDTREK AT5



Welcome to the world of more

New Dunlop Grandtrek AT5 gives you more off-road capability, more mileage, more wet grip and more braking performance.

It even comes in more sizes. Ask your dealer for the Grandtrek AT5 to fit your vehicle.



THE SUV/4X4 TYRE THAT GIVES YOU THE BEST OF BOTH WORLDS

50% MORE TYRE MILEAGE
25% MORE HANDLING STABILITY
10% MORE WET GRIP PERFORMANCE
8% MORE QUIET

GRANDTREK AT5

Choose a Dunlop specialist to give you the right Dunlop Grandtrek AT5 for your SUV or 4x4

ADVANCED TREAD DESIGN

Long Connected Block

Adopting a "long connected block" design gives more even contact pressure distribution, which results in better direct grip for **improved handling stability in both straight line running and cornering.**



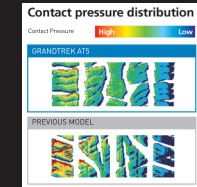
New Stone Ejector

A stone ejector sitting in the shoulder main groove reduces stone damage to **help prolong the life of the tyre.**



Larger Block

This feature achieves better even contact pressure which reduces uneven wear to significantly improve tyre life while increasing the actual contact area for **better wet grip performance.**

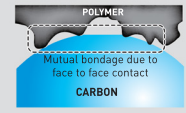


"SUPER ABRASION CARBON" COMPOUND

NEW FORMULA compound increases tread block rigidity which **reduces wear, uneven wear and improves handling stability.**

EXISTING COMPOUND

Heat, which makes the compound grip better, is created when detaching carbon from polymer.

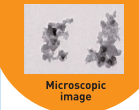


NEW AT5 COMPOUND

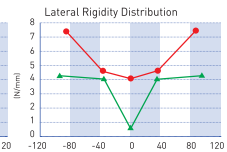
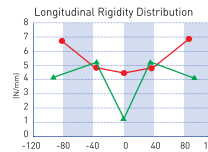
Super Abrasion Carbon's micro-structure gives more total contact area between carbon and polymer.



Increased contact area gives more heat and more grip.



NEW COMPOUND IMPROVES BLOCK RIGIDITY



—●— GRANDTREK AT5
 —▲— PREVIOUS MODEL

The fine structure of super abrasion carbon increases the bonding point between carbon and polymer, enhances the reinforcement of rubber and increases the block rigidity of GRANDTREK AT5.

DO MORE